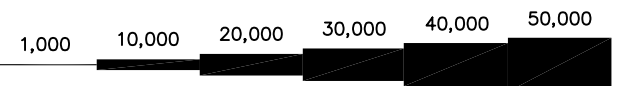
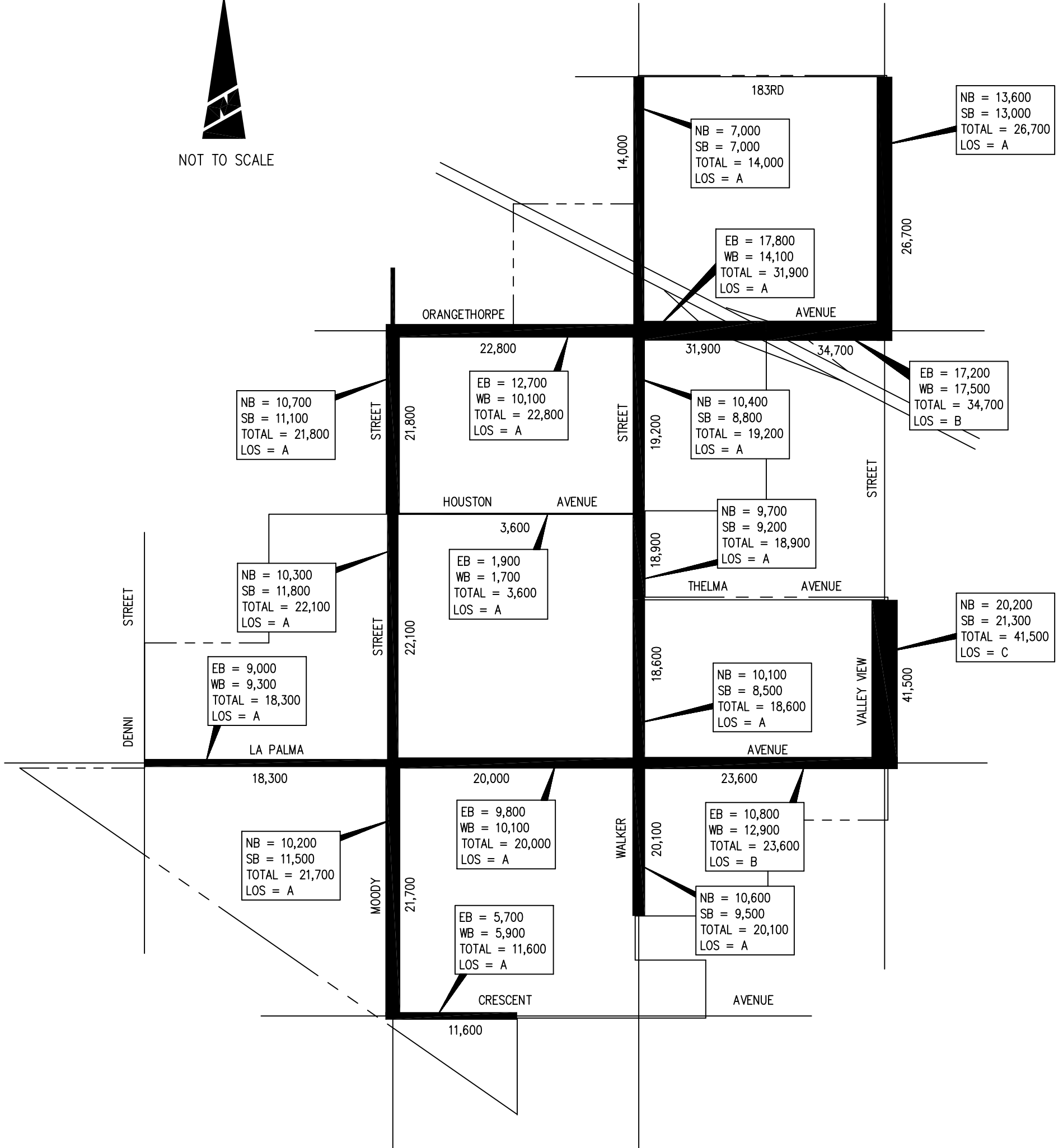


# CITY OF LA PALMA 2011 AVERAGE DAILY TRAFFIC VOLUMES



NOT TO SCALE



VOLUMES SHOWN REPRESENT AN AVERAGE OF BOTH DIRECTIONS OF TRAVEL FROM 24-HOUR MECHANICAL TRAFFIC COUNTS TAKEN AT EACH LOCATION DURING THE MONTH OF SEPTEMBER.

PREPARED BY:

**HARTZOG AND CRABILL INC.**  
Consulting Traffic Engineers

275 Centennial Way, Suite 208, Tustin, CA 92780  
(714) 731-9455

# CITY OF LA PALMA

## AVERAGE DAILY TRAFFIC VOLUMES (24-HOUR TWO-WAY TRAFFIC)

2011 \*

<u>LOCATION</u>	<u>1999</u>	<u>2006</u>	<u>2009</u>	<u>2011*</u>
<b>MOODY STREET</b>				
South of Orangethorpe Ave.	24,100	23,300	22,400	21,800
South of Houston Ave.	23,100	18,900	20,700	22,100
South of La Palma Ave.	22,200	24,600	22,300	21,700
<b>WALKER STREET</b>				
South of 183rd St.	16,500	18,200	14,600	14,000
South of Orangethorpe Ave.	18,400	20,200	19,200	19,200
South of Houston Ave.	20,000	20,500	18,500	18,900
North of La Palma Ave.	20,000	20,600	18,600	18,600
South of La Palma Ave.	19,200	21,100	20,700	20,100
<b>VALLEY VIEW STREET</b>				
South of 183rd St.	30,200	25,600	31,200	26,700
North of La Palma Ave.	38,600	43,400	42,400	41,500
<b>ORANGETHORPE AVENUE</b>				
West of Walker St.	20,600	22,500	22,500	22,800
East of Walker St.	31,100	32,700	31,200	31,900
West of Valley View St.	37,400	33,400	36,100	34,700
<b>HOUSTON AVENUE</b>				
Moody St. to Walker St.	3,700	3,300	3,700	3,600
<b>LA PALMA AVENUE</b>				
Denni St. to Moody St.	18,600	17,600	16,200	18,300
West of Walker St.	19,300	18,400	18,500	20,000
West of ValleyView St.	20,400	20,200	22,000	23,600
<b>CRESCENT AVENUE</b>				
East of Moody St.	13,700	12,600	13,200	11,600

- (1) Sources of Traffic Volumes are Traffic Data Service, NDS/ATO
- (2) Traffic Volumes are Rounded to the Nearest 100 Vehicles.
- (3) Volumes Shown Represent an Average For Both Directions of Travel of 24-Hour Mechanical Counts.